

# Welcome to **Pittsburgh...**

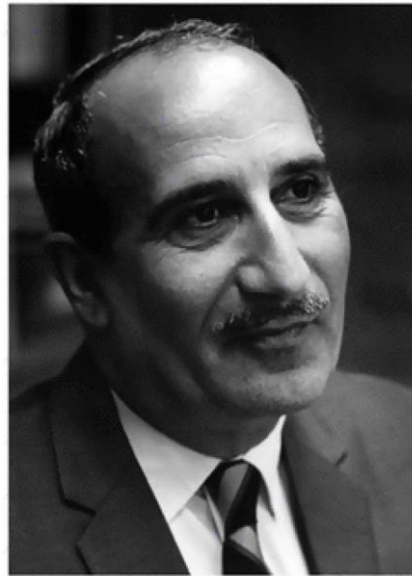


# **...city of innovation**

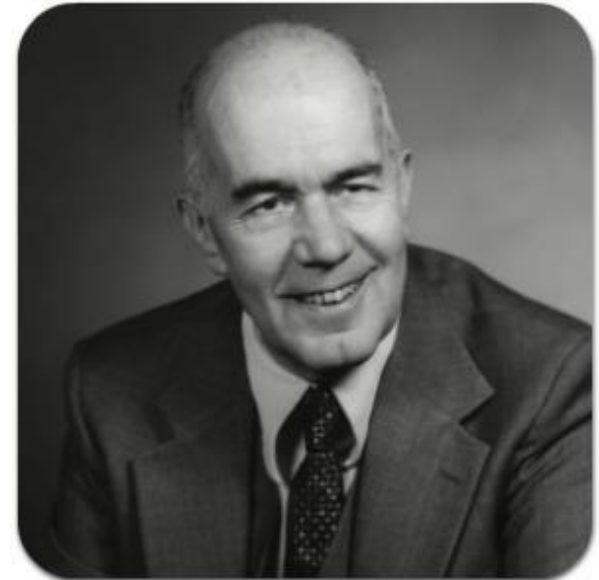
# First industrial math programming model – 1951

Also, first to be  
solved by computer

LP model for a  
Gulf oil refinery



Andrew Charnes



William Cooper

“First killer app in operations research”

# Birthplace of artificial intelligence – 1959

General Problem  
Solver

Developed at  
Carnegie Mellon  
University



Alan Newell



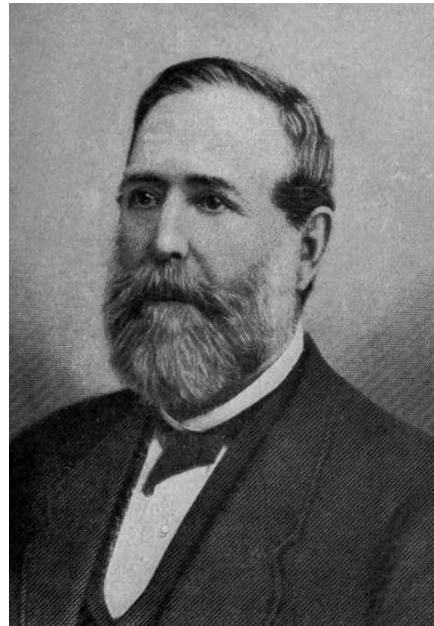
Herbert Simon

# Birthplace of modern oil industry – 1850s

First U.S. petroleum refinery, 1853,  
at 7<sup>th</sup> & Grant

First commercial-scale petroleum refinery,  
1861

58 refineries in  
Pittsburgh  
by late 1860s



Samuel Kier



Edwin Drake



# First drive-in gas station – 1913



Baum Blvd. & St Clair St.

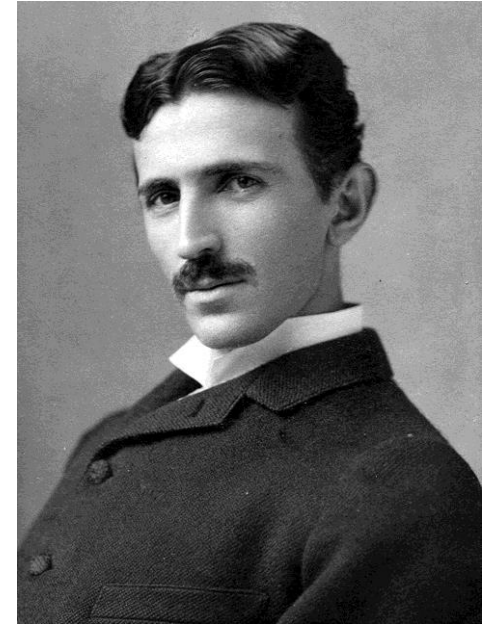
# Birthplace of the Westinghouse air brake – 1868

Key to modern  
railway systems.

Westinghouse and  
Tesla were pioneers  
in AC power systems.



George Westinghouse



Nikola Tesla

# Birthplace of aluminum industry – 1888

Pittsburgh Reduction  
Company

Also first  
all-aluminum  
skyscraper, 1953



ALCOA Building

# Birthplace of Ferris wheel – 1893

Designed by  
George Ferris,  
Pittsburgh engineer



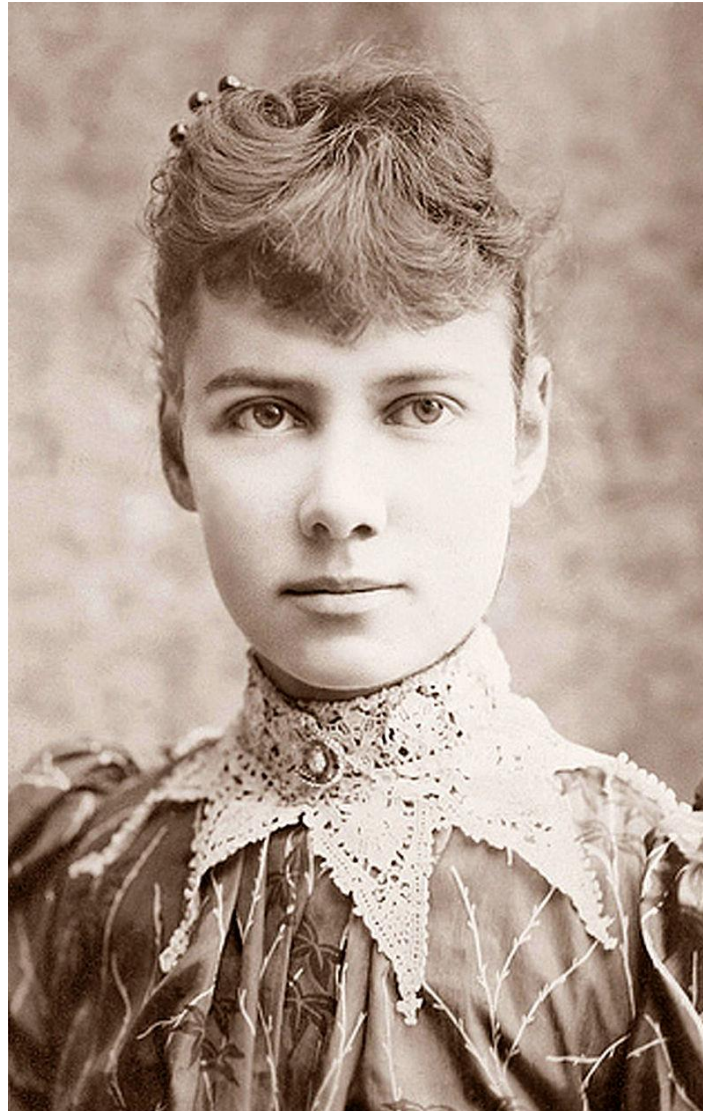
Original Ferris wheel  
Chicago World's Fair



# Pioneering investigative journalism – 1880s

Investigation of  
working women  
for *Pittsburgh  
Dispatch*

Exposé of insane  
asylums  
(New York City)



Elizabeth  
Cochrane

aka “Nelly Bly,”  
a song by  
Stephen Foster,  
“Father of  
American  
music”

...also from  
Pittsburgh!

# First motion picture theater – 1905

The Nickelodeon,  
Smithfield St



# First commercial radio station – 1920

Established by  
Westinghouse  
Electric Corp

Still in  
operation  
today



# First community-owned public TV station – 1954

WQED, producer of  
Mr. Roger's  
Neighborhood

Still in operation  
today

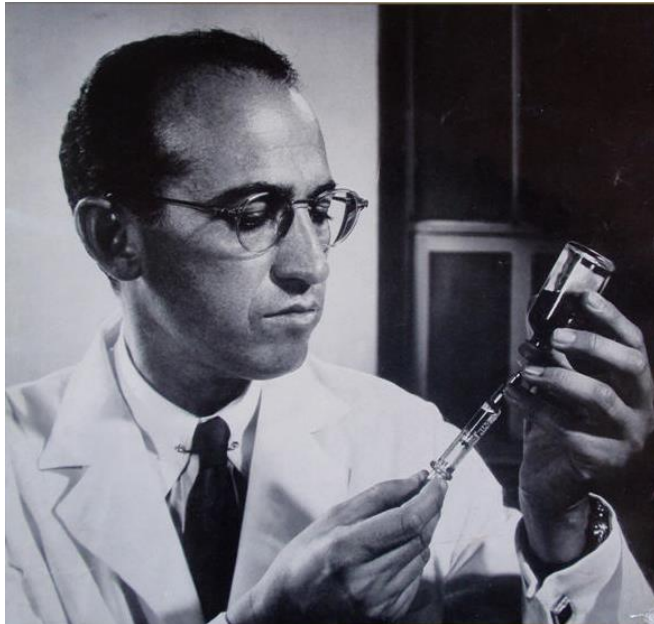


Fred Rogers

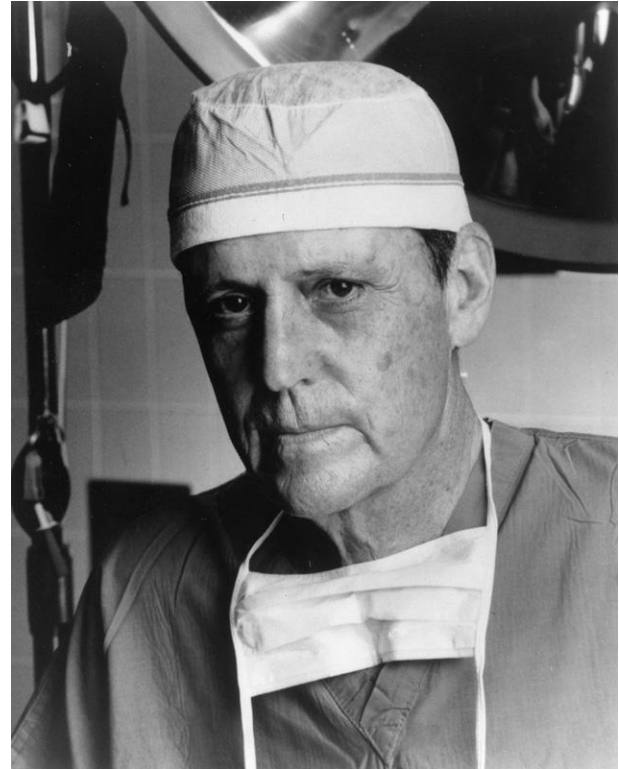


# Medical pioneers – 1950s to the present

At University of Pittsburgh  
School of Medicine



Jonas Salk  
Developer of polio vaccine



Thomas Starzl  
“Father of modern  
transplantation”

# Seminal contribution to haute cuisine – 1967

Big Mac, first served  
in Uniontown,  
near Pittsburgh



# Birthplace of the emoticon – 1982



19-Sep-82 11:44 Scott E Fahlman :-)  
From: Scott E Fahlman <Fahlman at Cmu-20c>

I propose that the following character sequence for joke markers:

:-)

Read it sideways. Actually, it is probably more economical to mark things that are NOT jokes, given current trends. For this, use

:- (

# Legendary jazz innovation – 1920s to the present

Presentation by MCG Jazz...



Earle Hines



Billy Strayhorn



Erroll Garner